

Dear SoBA Member,  
Please enjoy reading this month's issue and make note of important dates & information.



July 2016

## Message from the President

### SoBA Membership Renewal

Renewal forms for your 2016-17 SoBA membership have been mailed out. The membership year begins the first of September 2016. Receiving the form now gives you plenty of time to take care of your renewal.

There is only one change in the upcoming fee structure that is the non-sit fee. There are still just ten (10) non-sit spots. The limit on photographers is still twenty. Please print very carefully so that we collect information correctly.

You may either mail your renewal form with your check to:

SoBA  
PO Box 1972  
Bluffton, SC 29910

Or:

You may put the renewal form with your check in an envelope and

put it in the cash box at the gallery.

Looking forward to a great year, ART ON.....

**Gayle Miller, President  
Society of Bluffton Artists**

## **SOBA**

We are the SOCIETY OF BLUFFTON ARTISTS  
We are artists from all walks of life  
We pride ourselves on our diversity  
We display works of all artistic levels  
We offer affordable original art and photography  
We hang a completely new show every month  
We offer classes for beginners as well as experts  
We give scholarships to local high school art students  
We offer free art classes to 4th and 5th grade students in  
all Bluffton public schools  
We are the only non-profit gallery in Bluffton  
We are members of the ART DISTRICT of Bluffton  
We are members of the BLUFFTON MERCHANTS ASSOCIATION  
We do a lot with very little  
*We are an all-volunteer organization*

*(Written by Steve Moscovitz)*

[Visit our website](#)

---

**Change of Show:**

**Non-display members are always welcome and needed to man**

gallery hours. Contact Pat Gardiner [robpat@hargray.com](mailto:robpat@hargray.com) for training if needed.)

## Drop off 9:30 am to 11:30 am

### FEATURED ARTIST CALENDAR FOR 2016

July 5 (Tuesday) - July 31

Lauren Terret

Reception 5-7 pm, Friday July 8

August 1 - Sept 4

Sandy Rhodes

Reception 5-7 pm Friday August 5

Sept 6 (tues) - Oct 2

Past Presidents Show

Reception 5-7 pm, Friday Sept 9

Oct 3 - Nov 6

12 x 12 SOBA Fundraiser

\*Reception 3-5 pm, Sunday Oct 9

(\*daylight savings change)

November 7 - December 4

Joan McKeever

Reception 3-5 pm, Sunday Nov 13

December 5 - December 31

Small Art Show - Details will follow

Reception 3-5 pm, Sunday Dec 11

---

## July at the SoBA Gallery

"Local Color "

Featured Artist - Lauren Terret



The Society of Bluffton Artists presents:

## "Local Color"

July's Featured Artist - Lauren Terret

**July 5 through July 31**

The SOBA Gallery is excited to feature the very "painterly" work of Lauren Terrett from July 5 - 31. Lauren's show is entitled "Local Color," which is appropriate in more ways than one. She is inspired by the vibrant and lush colors of the Lowcountry atmosphere, customs and features that infuse her surroundings. Lauren skillfully uses "local color" in her paintings - showcasing the natural color of her subjects. Her work is intuitive and impressionistic. Thick paint, texturing, charcoal lines and many colors define her paintings. Lowcountry seascapes, flora, local people, and local landmarks are her favorite subjects.

Originally from Connecticut, Lauren first discovered her love of fine arts in high school where she flourished with her teacher, who gave her confidence and courage to experiment and start to develop her

skills. She went on to pursue a Fine Arts degree from Cazenovia College in upstate New York. While there, acrylics became her medium of choice. She remembers her professor pushing her talent to a new level.

After her first daughter was born, she decided to pursue her lifelong desire to become a Registered Nurse. Along came her second daughter and there proved to be little time to paint. While she found parenting and her nursing career both very rewarding, she longed to get back to her art. In 2015 she married the love of her life, and with his encouragement, took a leap of faith. She left nursing and immersed herself in her painting.

Lauren credits The Society of Bluffton Artists and The Hilton Head Art Academy for providing varied classes and venues to show her work. Lynda Potter has been her mentor and continues to guide her on her journey. "While nursing has enabled me to help others heal, painting has a healing effect on me." Lauren is back at her canvas as much as time allows as she now splits her time between nursing and painting. She currently calls Bluffton home and her grown daughters live nearby.

**Opening reception with refreshments,**

**Friday July 8 from 5-7 pm.**

---

**Wrap Watercolor Paper over Canvas Stretchers  
- FREE CLASS - July 21**



1 - 2 pm

Join us for this helpful instruction by Mary Ann Putzier. The 12 x 12 show coming up in October requires all art to be mounted on same size / shape canvases and Mary Ann will show you how to make your watercolor paintings conform to size!

---

## Gallery Stats

### SoBA Monthly Statistics

May, 2106

Gallery Visitors: 1613

Guest Register Entries: 289

Visitors from US (from sea to shining sea), Canada & Scotland

Art Sales Revenue: \$6,509.00

Yard Sale Revenue: \$1,400.00

Number of Pieces of Art Sold: 31 (plus jewelry)

Number of Artists that Sold Art: 22

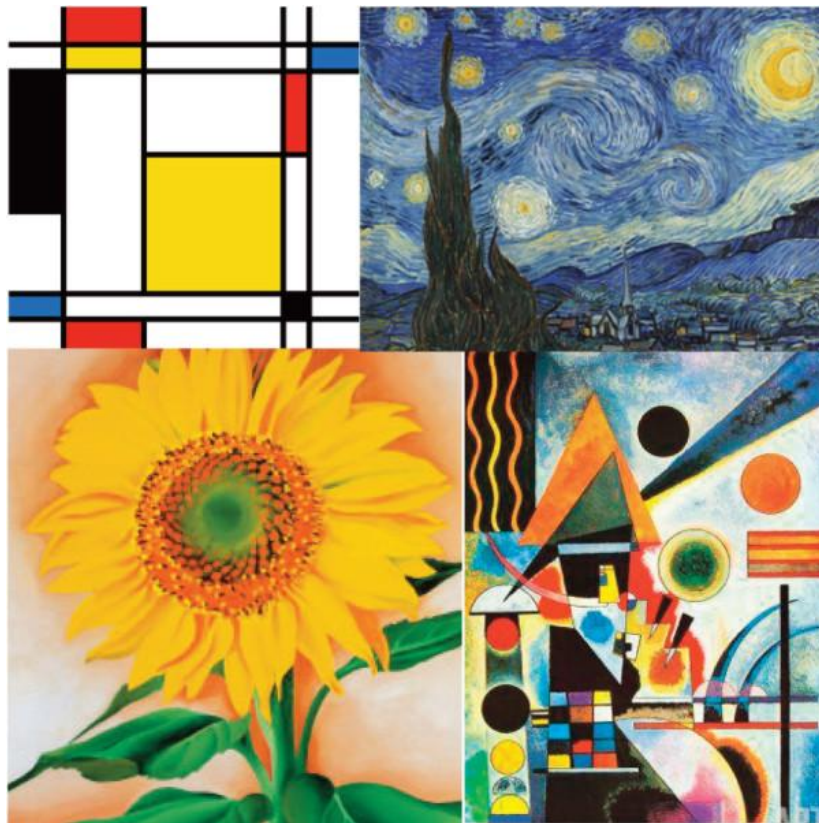
---

## SOBA's Summer Art Camp for Kids

Session II is about to begin!

SOBA's Summer Kids Art Camps 2016 - Art with the Masters  
Pat Diemand Instructor; Ages 8-12

Each session will be held at the SOBA Center for Creative Arts,  
located next door to the SOBA Gallery at 8 Church Street in Bluffton.



**Session II July 11-15 \$100/WEEK - Scholarships available**

Mon. 7/11 Piet Mondrian - Examine the world of Mondrian and create a picture in his style using geometric shapes and primary colors.

Tues. 7/12 Georgia O'Keefe - Students will make large scale paintings of flowers that mimic the art of this famous artist.

Wed. 7/13 Wassily Kandinsky - Investigate the world of color and how it relates to emotion. Students will create an oil pastel picture while listening to music.

Thurs. 7/14 Claude Monet - Students will draw an original landscape in the style of Monet.

Fri. 7/15 Greek Pottery Designs - Students will be introduced to the designs of ancient Greek pottery and the use of geometric and organic shapes in making ordered Patterns

Reservations must be made in advance. To register, click below or call 843-247-2868.

[SoBA's Summer Kids Camp](#)

or

[Click Here for Download](#)

## Scenes from Session I

SoBA's CCA Building has been bursting with energy from budding artists and laden with enthusiasm and creativity during the first session of Summer Art Camp for Kids. The children in the first session of SOBA's Art with the Masters camp have indeed created masterpieces! Each day has had a theme - they've covered Pointillism à la George Seurat and cut paper techniques in the style of Matisse. They've also studied Leonardo Da Vinci, and painted amazing dream paintings in the style of Marc Chagall. Of course Vincent Van Gogh had a day to himself in this fun week!

Pictured with these young artists are helper Joy Lillith Hermann (left) and instructor Pat Diemand (right).

















Dear, Soba art camp  
Thank you for the  
Scholarship. Trust me  
I will put all my work  
and effort towards the  
art.

Sincerely,

Alana R. Stokes





As an all volunteer organization, we at SoBA Gallery have to be able to count on one another to keep the gallery open and professional. It is time for each of you to know if there are problems with having the Gallery open during regular business hours. If the Gallery has to be closed, it hurts each of us as we can not only not have art shown, but more importantly - not sold. Names will never be mentioned.

We had an incident Friday, June 3 during the afternoon shift. Although that person signed up, was called with a reminder and emailed a reminder, they did not show up that afternoon. That was a crisis, as you all know. The person who worked the morning shift extended her stay until relief could be located, and the relief could only stay until four. That means that not only were two responsible members terribly inconvenienced, but that our Gallery had to close at 4 pm.

I hope there are no more incidences like this, but be assured if there are, you will be notified.

Pat Gardiner Staffing Co-ordinator. [Robpat@hargray.com](mailto:Robpat@hargray.com)

---

## Yard Sale at SoBA Recap

Saturday May 28th

It was a day when storm clouds threatened, it was a Saturday in late May 2106. The plan was a Yard Sale on the Corner of Church and Calhoun in Old Town Bluffton. The idea was to bring together the giving, sharing members of the Society of Bluffton Artists to raise awareness of SoBA and also raise money for organization.

All the plans, ideas and weather came together for a wonderful result. Tables filled with art, art supplies, art books and lots more covered the yard on both sides of SoBA. We set up and the sale began. People came, enjoyed the experience and bought. The public learned more about SoBA and the artists of SoBA that fun Saturday.

Together we laughed, worked and shared a very good experience. It was the First Annual SoBA Yard Sale. We sold a little over \$1,400. That revenue will be reinvested in SoBA. New sidewalk signs and bright fun paint for the front door of SoBA will soon be in place.

Thank You SoBA Members.

The Fundraising Committee





---

## Upcoming Classes

### Society of Bluffton Artists (SOBA) Workshop Schedule

SOBA's workshops offer the opportunity to learn a variety of art skills as taught by some of the region's leading artists, and will provide attendees the opportunity to nurture, and foster, their love of art. Each workshop will be held at the SOBA Center for Creative Arts, located next door to the SOBA Gallery at 8 Church Street in Bluffton. All SOBA workshops are led by established artists, and include instruction and hands-on demonstrations.

July 19-20; 9:30 am - 2:30 pm

**Joan Wykis**

**Watercolor Batik**

In this creative class, Joan will show and assist students from beginning to end of painting a vibrant fresh and rich looking watercolor batik on rice paper. It is a process using an electric skillet, special rice papers, watercolors, canning wax and

an iron. The information is a combination of design, line, color and reserving whites and lights.

Cost: \$125 members; \$150 non-members

**November 1-3; 10 am - 4 pm**

**Greg Barnes**

### **Landscape Painting**

Welcoming those with a working proficiency in pastel or oil, this workshop will build on the foundations of strong design, value, and color relationships in landscape painting.

Cost: \$300 members; \$325 non-members

Reservations must be made in advance for each workshop. For more details or to register, please visit [www.sobagallery.com](http://www.sobagallery.com). Questions (843)-247-2868



### **Scenes from Morten Solberg's Class in June**

The world renowned Morten E. Solberg held a waterbase media recently at the SOBA CCA which was attended by many very talented artists in their own rights. They worked at painting in an experimental direction, landscape, figure, florals and wildlife. Mort demonstrated in watercolor, gouache, acrylic, gesso, and the combination of all of these mediums. The 'students' were in awe of his skill and really enjoyed the experience - creating gorgeous paintings in the process!







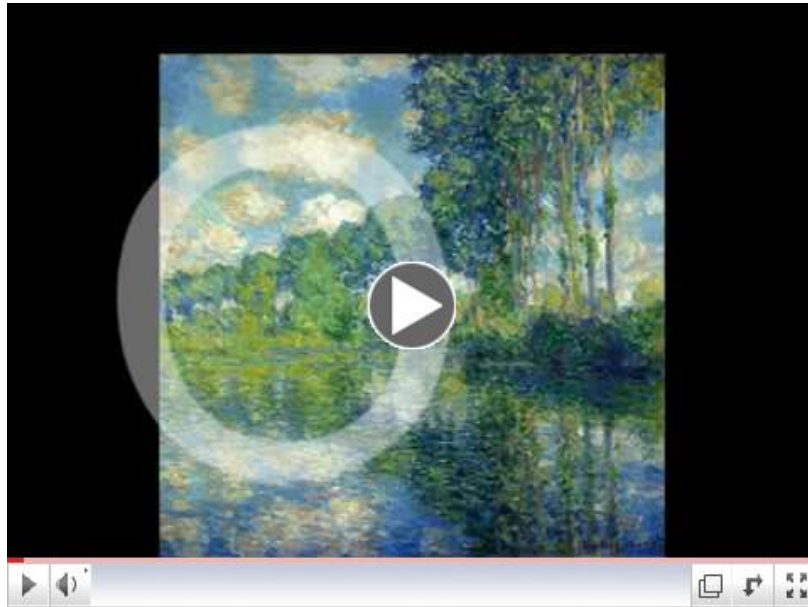






Did You Know?

## The "Spotlight Effect" - Painting Technique



### The Concept

Make an area or object comparatively lighter and sharper than its surroundings.

### Ways to do it

- Lighten the focus area and sharpen edges  
or
- Darken the surrounding areas and soften edges  
or
- BOTH of the above - for extra punch!

**Glazing:** Mix a little bit of paint with lots of painting medium (something like Liquin) and lay this on the dry painting over the areas you want to subdue. Bonus - this harmonizes the colours beneath - and it's all about harmony isn't it?. What colour should you use? It's good to use a darker colour than what you're painting on top off. If you use a lighter colour it tends to look like a milky layer over the top. For that reason it's not good practice to try lightening an area by glazing over the top either - no harm in trying, but you'll see what I mean.

**Tip:** You can use a rag to apply a glaze, and to remove it where you don't want it, or soften the edges of the glaze.

**Scumbling:** Just grab some dryish paint (with no painting medium mixed in with it) and with an old brush work it loosely over the surface of your dried painting in the areas you want subdued.

Tip: Use a slightly darker mixture than what's there already.

Wet in Wet: This is the trickiest one because it requires a bit of planning. Decide where your focus area is going to be, then choose to either start there or begin with the surrounding area. Either way you have to keep your spotlight effect goal in mind all the time. If you start with the outside, your mixtures should (or could) be slightly darker and thinner, with softer edges, the paint getting thicker and lighter as you move towards the center of focus.

Tip: Use BIGGER brushes for the outer areas.

---



## Get Ready! Coming this October - 12 x 12

SoBA's Annual Fundraising event is set for October 2016. Canvases will be available for purchase at the next change of show. They will be

**\$10 each with a limit of 2 per person.**

We kindly ask that purchased canvases be used specifically for this fundraising event.

---

## Touch of Blue Opening Reception

SoBA members and guests were delighted to be joined at the "Touch of Blue" reception in June by members of the Bluffton Police Department. Joy Nelson, the Department's Community Relations Manager, Officer Jason Rodriguez, Officer George Wetzel, and Major Manning each spoke briefly about their involvement in our community

and the excitement over their new K-9 Unit - they will be receiving two German Shepherds that are completing their training now and promised to give SoBA members and friends a demonstration of the dogs' and the officers' skills as soon as they are in place.



Bonnie Riley chats with Joy Nelson, the Bluffton Police Department's Community Relations Manager, and Officer Jason Rodriguez



Major Manning, Officer Jason Rodriguez and Officer George Wetzel

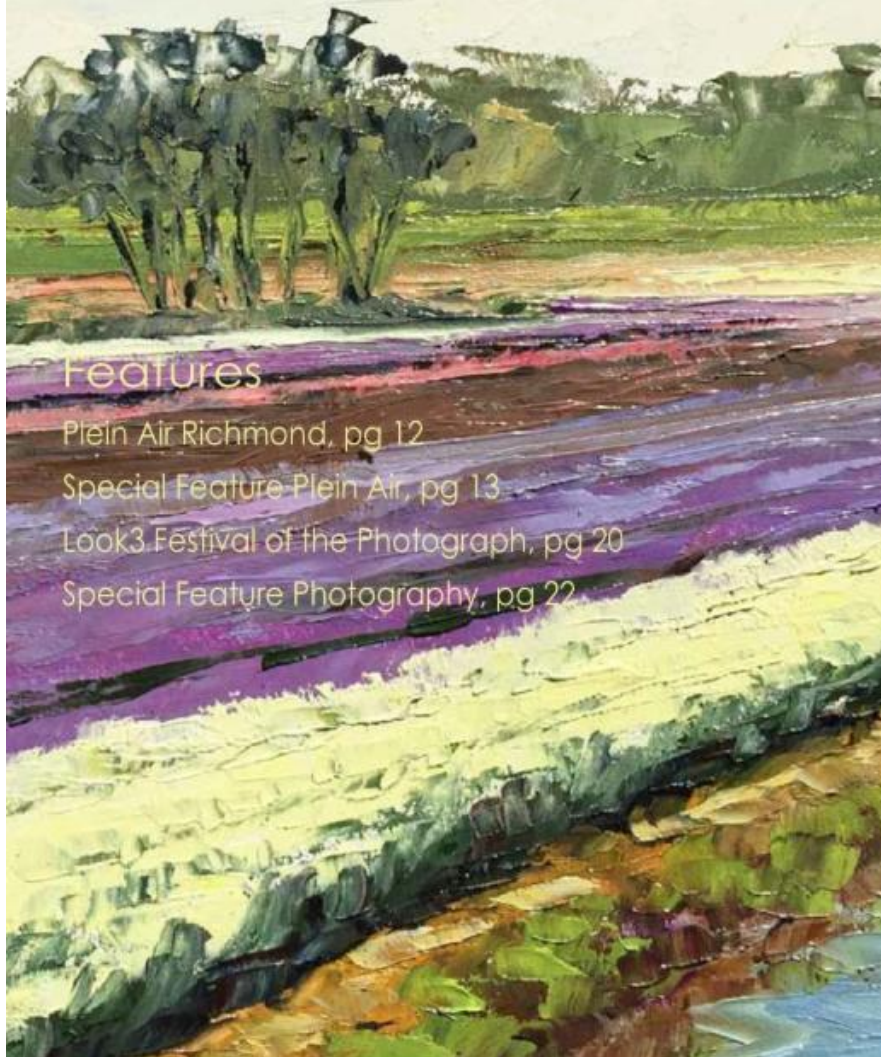
---

## Artist Opportunity

The artGuide is once again featuring it's Annual Artist Directory in the October issue. Listings will be integrated into the issue, as well as added to the full multimedia suite of platforms. Cost is **\$50 per artist** and includes **an image, 50-word biography, and contact information**. This will be printed in the magazine, included on the digital version with live clickable images linking to artist websites, and will be featured on a website gallery, and social media. Deadline for submission to the magazine is **AUGUST 1st**.

[www.artguidemag.com](http://www.artguidemag.com)

# artGuide



## Features

Plein Air Richmond, pg 12

Special Feature Plein Air, pg 13

Look3 Festival of the Photograph, pg 20

Special Feature Photography, pg 22

---

## SoBA's Volunteers are the BEST!

Pat Diemand is doing a wonderful job on the door and trim at the Gallery! The volunteers at SOBA are the BEST!!



---

## 2016-2017 SoBA Board of Directors:

**Gayle Miller**  
**Hugh O'Connor**  
**Mary Ann Putzier**  
**Barbara Fiscarel**  
**Bonnie Riley**  
**Missy Yost**  
**Sandy Rhodes**  
**Jeanne McKenna**  
**Marian Sanders**  
**Steve Moscowitz**  
**Rich Matheny**  
**Pat Gardiner**  
**Sandra Wenig**  
**Mary Ann Putzier**  
**Anita Stephens**  
**Murray Sease**

**President**  
**Vice President**  
**Recording Secretary**  
**Treasurer**  
**Gallery Manager**  
**Membership Chair**  
**Corresponding Secretary**  
**Display Manager**  
**Member at Large**  
**Member at Large**  
**Member at Large**  
**Staffing Chair**  
**Center for Creative Arts**  
**Center for Creative Arts**  
**Newsletter Editor**  
**Public Relations**

**Norma Deal**  
**Edith Wood**  
**Mary Kay Long**  
**Gaylon Rex Greger**

**Satellite Galleries**  
**Art Walks**  
**Art Walks**  
**3D Committee**

**Newsletter information is welcomed for submission by the 25th of each month for inclusion in the following month's "The Eclectic." Send submissions to:**

**[info@sobagallery.com](mailto:info@sobagallery.com)**

---



**Be sure to follow SOBA on  
FACEBOOK and like our page!**

Facebook is a fun and easy way to keep up with SOBA happenings.

It's easy to sign up!

**Like us on Facebook** 

Society of Bluffton Artists  
6 Church Street, Bluffton, SC 29910 | 843.757.6586 | [info@sobagallery.com](mailto:info@sobagallery.com) | [www.sobagallery.com](http://www.sobagallery.com)

STAY CONNECTED:

